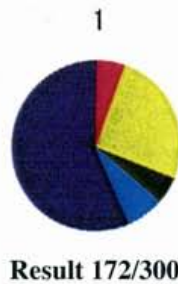
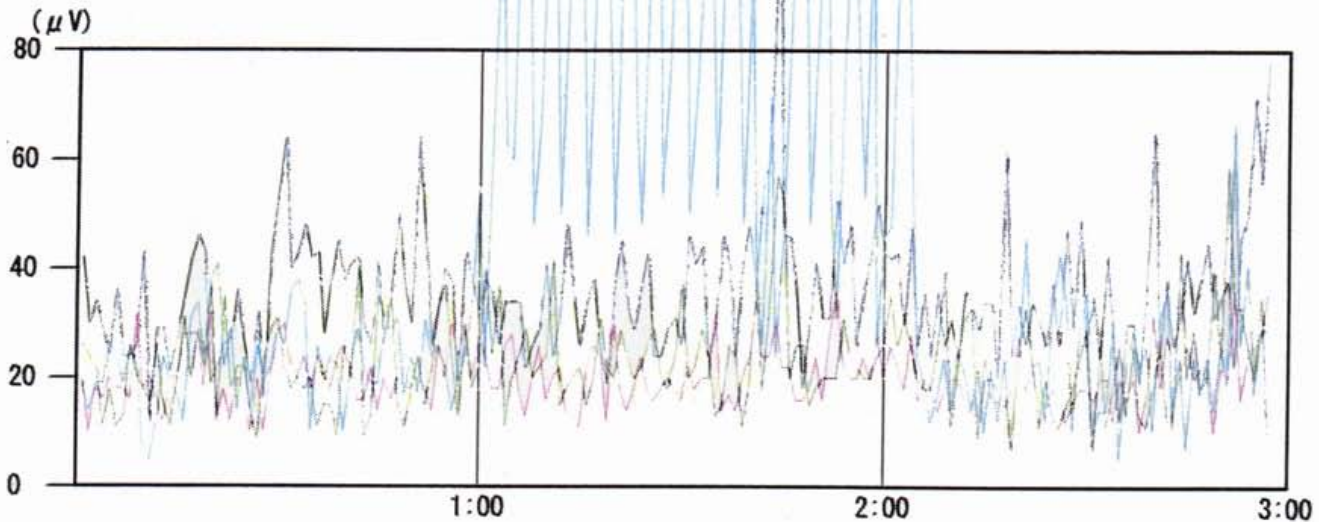


Mind Sensor II

Date Of Test 3/05/2001
14:59:46



	Standard Value		Channel 1				Before
	%	SEC	%	SEC	AVE	MAX	
■	86.2	52	5.2	3	13	32	β
■	84.5	51	25.9	16	23	58	Fast
■	77.6	47	5.2	3	16	40	Mid
■	82.8	50	6.9	4	20	41	Slow
■	98.3	59	58.6	35	28	64	θ
			0.0	0	17	36	Art

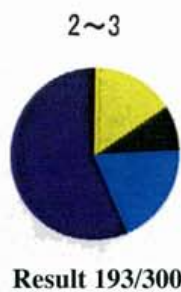


	Standard Value		Channel 1				During
	%	SEC	%	SEC	AVE	MAX	
■	86.9	52	0.0	0	15	36	β
■	96.7	58	1.6	1	27	50	Fast
■	95.1	57	1.6	1	20	57	Mid
■	100.0	60	90.2	54	79	134	Slow
■	100.0	60	6.6	4	34	106	θ
			0.0	0	15	43	Art

Results No. 1 5/3

A very high level of 7-8 Hz (Schumann Resonance) was detected in the brain waves immediately after switching the ELANRA on after one minute. Overall, 90% of the Schumann Resonance was observed during the 54 seconds.

The beta waves disappeared and only the theta and alpha waves were observed when the ELANRA was switched off after two minutes.



	Standard Value		Channel 1				After
	%	SEC	%	SEC	AVE	MAX	
■	84.5	51	0.0	0	14	36	β
■	87.9	53	15.5	9	20	54	Fast
■	75.9	46	8.6	5	19	59	Mid
■	72.4	43	19.0	11	20	115	Slow
■	98.3	59	56.9	34	25	78	θ
			0.0	0	15	44	Art