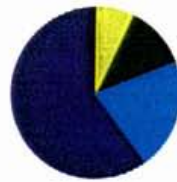
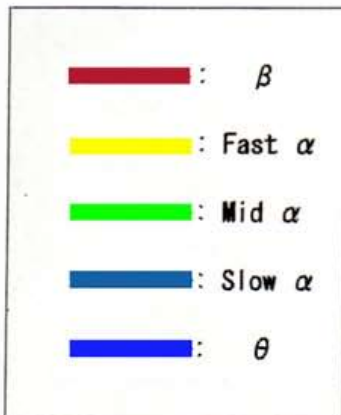
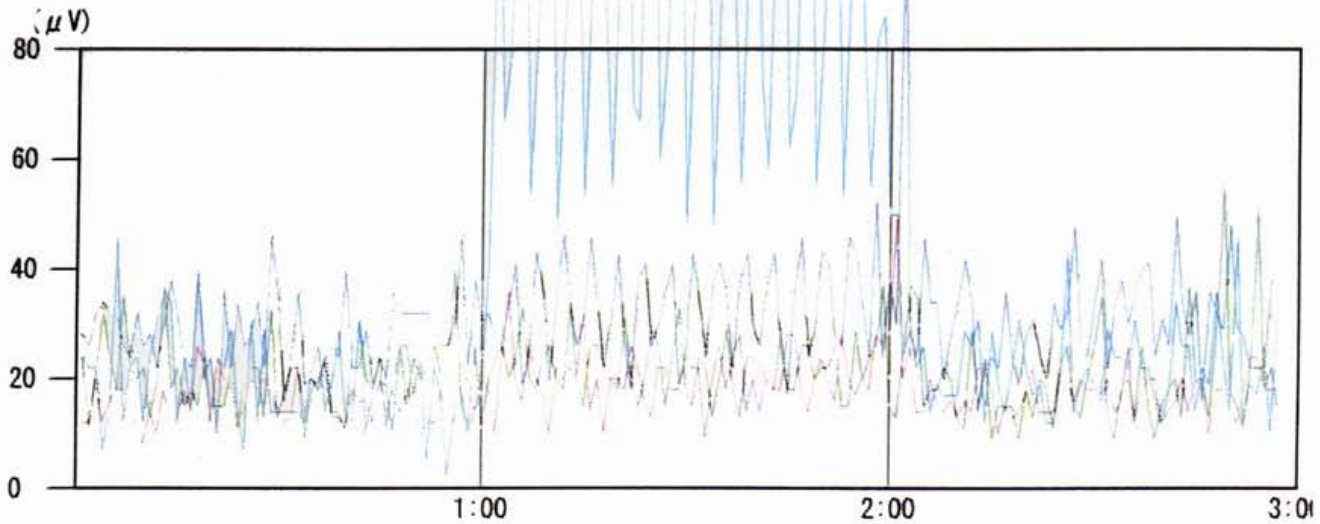


Mind Sensor II

Date Of Test 11/05/2001
16:53:16



208/300

	Standard Value		Channel 1				Before
	%	SEC	%	SEC	AVE	MAX	
█	51.7	31	0.0	0	12	26	β
█	69.0	41	6.9	4	16	34	Fast
█	81.0	49	12.1	7	15	40	Mid
█	56.9	34	20.7	12	18	46	Slow
█	98.3	59	62.1	37	27	46	θ
			0.0	0	9	29	Art

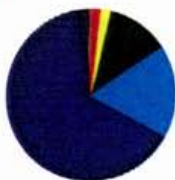


200/300

	Standard Value		Channel 1				During
	%	SEC	%	SEC	AVE	MAX	
█	83.6	50	0.0	0	17	36	β
█	96.7	58	0.0	0	24	40	Fast
█	95.1	57	0.0	0	19	37	Mid
█	98.4	59	98.4	59	90	139	Slow
█	100.0	60	1.6	1	31	53	θ
			0.0	0	14	23	Art

Results No. 2 5/11

Similar to previous case. ELANRA set to 7.83 Hz
It was observed that the slow alpha waves, close to the theta waves were prominent. Hence it can be concluded that the mind was in an ideal state of relaxation.



203/300

	Standard Value		Channel 1				After
	%	SEC	%	SEC	AVE	MAX	
█	69.0	41	1.7	1	12	50	β
█	70.7	42	1.7	1	14	42	Fast
█	74.1	44	12.1	7	15	55	Mid
█	81.0	49	17.2	10	20	50	Slow
█	98.3	59	65.5	39	24	106	θ
			2.0	1	10	29	Art